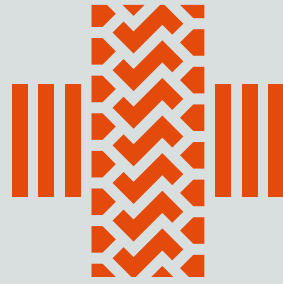







# Tracks and Wheels



# Material Handling

-  About
-  Services
-  Sellick Equipment
-  Dieci Equipment
-  JCB Equipment

[TWMaterialHandling.com](http://TWMaterialHandling.com)

Phone Number: 705-918-1000

Email: [materialhandling@tracksandwheels.com](mailto:materialhandling@tracksandwheels.com)



# Tracks and Wheels Material Handling

Tracks + Wheels not only supplying your equipment needs. You can count on Tracks + Wheels for ALL your material handling needs. We have you covered for racking, cantilever, shelving, flooring and etc.

## Services

- Shelving
- Custom Painted Cantilever
- Cantilever Racking
- Cabinets
- Cabinet Systems
- Epoxy Flooring



[TWMaterialHandling.com](http://TWMaterialHandling.com)

Phone Number: 705-918-1000

Email: [materialhandling@tracksandwheels.com](mailto:materialhandling@tracksandwheels.com)

# TRACKS WHEELS



Equipment

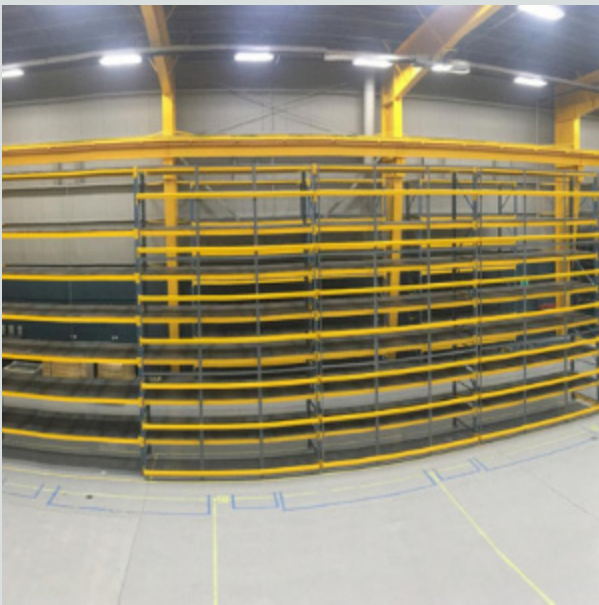


**Tracks and Wheels Material Handling**

# Services

You can count on Tracks + Wheels for ALL your material handling needs. We have you covered for racking, cantilever, shelving, flooring and etc.

## Shelving



## Cantilever Racking



[TWMaterialHandling.com](http://TWMaterialHandling.com)

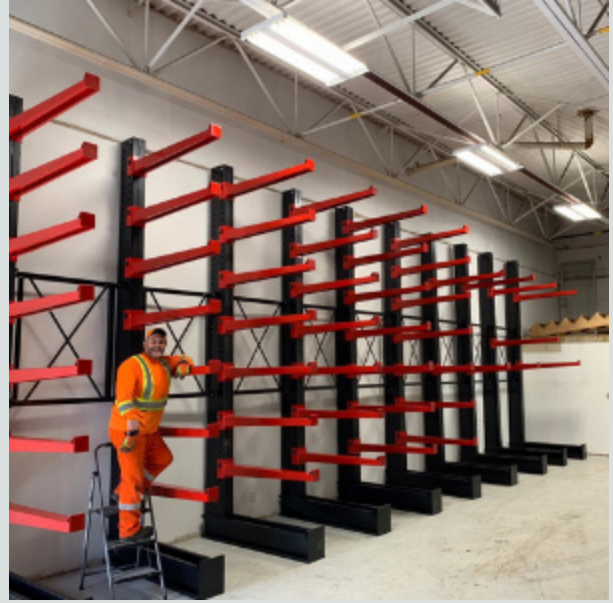
Phone Number: 705-918-1000

Email: [materialhandling@tracksandwheels.com](mailto:materialhandling@tracksandwheels.com)

Cabinet Systems



Cantilever Custom Painted



Cabinets



Epoxy Flooring



**Tracks and Wheels Material Handling**



[TWMaterialHandling.com](http://TWMaterialHandling.com)

Phone Number: 705-918-1000

Email: [materialhandling@tracksandwheels.com](mailto:materialhandling@tracksandwheels.com)

## S- Series Forklifts Rugged 6000-12000lbs Lifts



The S Series straight mast rough terrain forklift provides optimum operator visibility, safety and comfort while maximizing machine performance. The one-piece frame welded construction offers rugged durability.

## SLP Series Forklifts Low Profile 6000-8000lbs



It's small! It's low! It's tough! Sellick's low profile SLP Series lift truck is specially designed to work efficiently in close spaces but is tough enough to power through any rough, outdoor terrain

## S150 and S162 15,000 and 16,000lbs Lifts



The S150 and S162 lift capacity is 15,000 lbs and 16000lbs @ 24" center load. Engineered with productivity and efficiency in mind, the S150 and S162 are ideal for heavy industrial applications and provides excellent fuel economy.

**Tracks and Wheels Material Handling**

# DIECI



[TWMaterialHandling.com](http://TWMaterialHandling.com)

Phone Number: 705-918-1000

Email: [materialhandling@tracksandwheels.com](mailto:materialhandling@tracksandwheels.com)





## Heavy Lift Telehandler

Agriculture

Agri Farmer Series: 2,900kg -3,000kg, 6.35m - 8.65m

Agri Max Series: 5,000kg -7,500kg, 7.7m - 9.65m

Agri Plus: 4,000kg - 4,200kg, 6.9m - 8.9m,

Agri Star: 3,500 - 4,000kg, 6.4m - 9.6m



## Rotating Telehandlers

Pegasus Series:

4,000kg to 6,000kg maximum lift 15.7m - 29.6m



## Fixed Telehandler

Construction

Apollo Series: 2,600kg 5.68m

Dedalus Series: 2,900kg - 3,000kg, 6.35m - 8.65m

Icarus Series: 4,000kg - 5,000kg, 13.4m - 17.8 m

Samson Series: 5,000kg - 7,500kg, 7.7m - 9.65m

Zeus Series: 3,500kg - 4,000kg, 7.2m - 12.5m

# Tracks and Wheels Material Handling



[TWMaterialHandling.com](http://TWMaterialHandling.com)

Phone Number: 705-918-1000

Email: [materialhandling@tracksandwheels.com](mailto:materialhandling@tracksandwheels.com)

## JCB TLT35D 4x4



- Maximum lift capacity 7,000 lbs @ 14'
- 3,750 lbs at 78" forward reach for truck loading
- Turning Radius of 138"; overall width of 55"; overall height of 90.5"

## JCB TLT35D (2WD)



- Maximum lift capacity 7,000 lbs @ 14'
- 3,750 lbs at 78" forward reach for truck loading
- Turning Radius of 114"; overall width of 50"; overall height of 88.5"

## JCB TLT 30DHL (2WD) With High Lift Boom



- Maximum lift capacity 6,000 lbs @ 16'10"
- 3,750 lbs at 78" forward reach for truck loading
- Turning Radius of 114"; overall width of 50"; overall height of 88.5"

## JCB Electric Teletruk



JCB Electric Teletruk is one of the new generation of innovative products called E-Tech with zero emissions at point of use but no compromise on performance.

**Tracks and Wheels Material Handling**